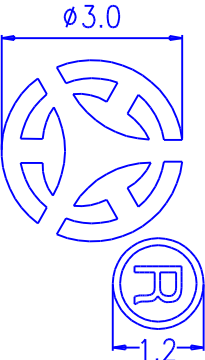


PIN	1	2	3	4	5	6	7	8	9	10	11	12	13	14	15	16	17	18	19	20
COM	F	C	IX	1A	1F	1G	2B	2A	2F	2G	3B	3A	3F	3G				X	:	COM
PIN	21	22	23	24	25	26	27	28	29	30	31	32	33	34	35	36	37	38	39	40
COM	COM	Y	-	4BC	DP3	3E	3D	3C	DP2	2E	2D	2C	DP1	1E	1D	1C	1B	PH	%RH	kpa



A:DETAIL

- 1.DISPLAY TYPE: TN/POSITIVE
- 2.VIEWIGN DIRECTION: 6:00
- 3.DISPLAY MODE: REFLECTIVE
- 4.DRIVING METHOD: STATIC
- 5.OPERATING VOLTAGE A: 5.0V
- 6.OPERATING TEMP.: -20°C~60°C
- 7.STORAGE TEMP.: -30°C~70°C
- 8.CONNECTOR: PIN

